



NEW SOLUTIONS TO OLD PROBLEMS BY THINKING 'INSIDE THE BOX'

Enclosed Wet Brake on Intermediate Shaft

- Eliminates alignment and leaky seal issues
- Allows for flow through cooling
- Same brake regardless of gearbox ratio
- Brake maintenance is easy
- Excellent thermal capacity

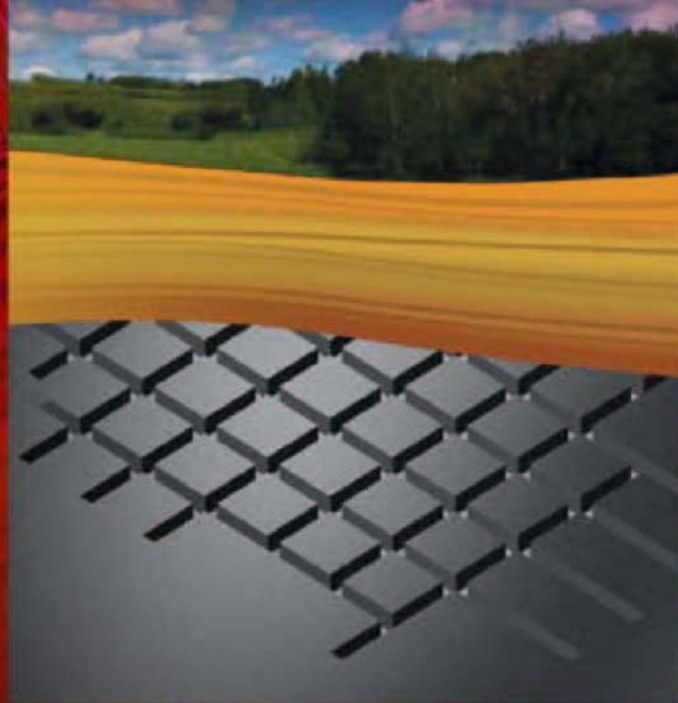
Increased Durability

- Bigger shafts
- Metallurgically stronger shaft material
- Improved housing for greater strength and rigidity

Retrofits Old Gearboxes

- Same mounting footprint
- Similar shape and size
- Same ratios

Gearboxes for scoops have been copied repeatedly. They are available from a number of sources and they suffer the same problems. *Now for the first time there is a new design that addresses old problems.*

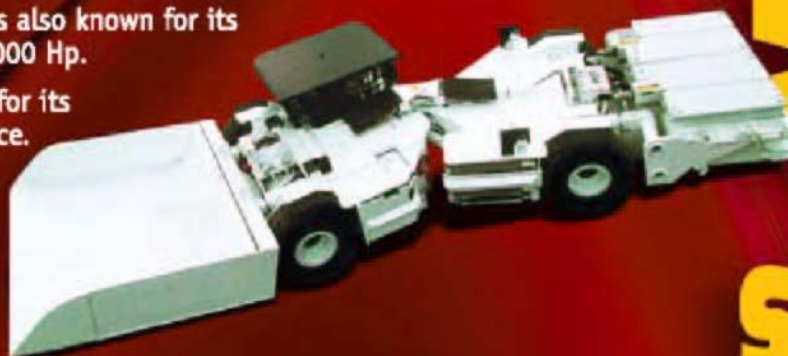


PT Tech is known in the coal industry for its torque limiters and enclosed brakes. Most continuous miners, shuttle cars and scoops have PT Tech products.

In other markets PT Tech is also known for its gearboxes... some up to 1000 Hp.

PT Tech is a trusted name for its quality and customer service.

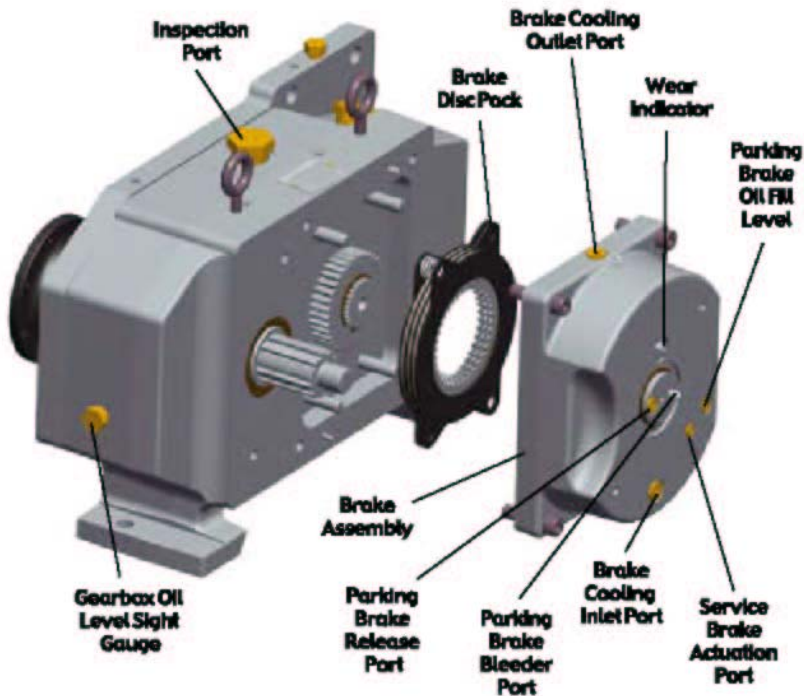
As an employee owned company we are proud to introduce our first scoop gearbox.



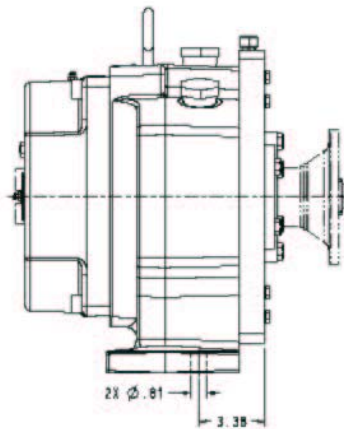
GEARBOX FOR SCOOPS

1441 Wolf Creek Trail • P.O. Box 305 • Sharon Center, OH 44274-0305 USA
330-239-4933 • fax: 330-239-2012 • www.pttech.com

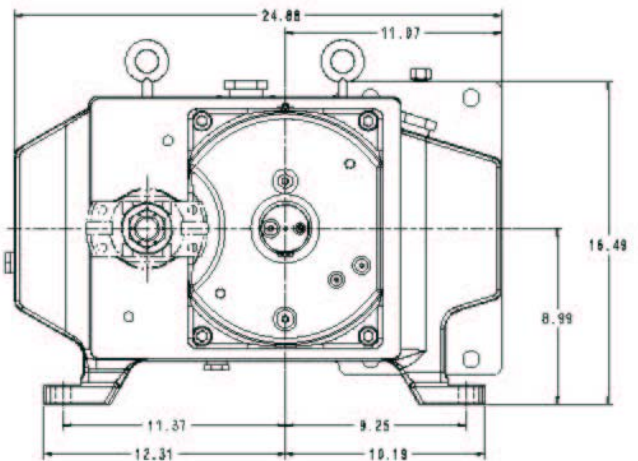
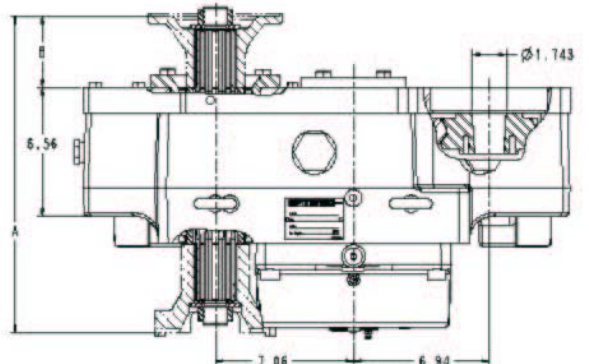
GEARBOX FOR SCOOPS



Dimensional Data



- For the "A" dimension:**
- With (2) companion flanges (5-1-6331) the dimension is 15.21
 - With (2) 7C flanges (513-067P1) the dimension is 16.96
 - With (1) companion flange (5-1-6331) and (1) 7C flange (513-067P1) the dimension is 16.18
- For the "B" dimensions:**
- With companion flange (5-1-6331) the dimension is 3.65
 - With 7C flange (513-067P1) the dimension is 4.43



Parking Brake

Min. Release Pressure	1000 p.s.i.
Max. Release Pressure	1500 p.s.i.

Gearbox

Horsepower @ 1500 RPM	75
Weight	562 lbs.
Input Spline	SAE 2-1/4 - 10
Output Spline	SAE 2-1/4 - 10

Service Brake

Energy Capacity	24,000 ft.-lbs./stop
Coolant Flow Required	2 g.p.m.
Max. Pressure	2000 p.s.i.

Gearbox Part No.	Ratio	Parking Brake Torque	Service Brake Torque @ 1300
PTT-477A-0	3.35:1	3710 LB-FT	2222 LB-FT
PTT-477B-0	4.56:1	5050 LB-FT	3025 LB-FT
PTT-477C-0	5.81:1	6435 LB-FT	3855 LB-FT

